

Prueba de Lectura

1. LECTURA DE NOTAS

① $\text{♩} = 72$



2. LECTURA RÍTMICA

PALMEAR RÍTMICAMENTE CON METRÓNOMO.

② $\text{♩} = 100$



3. ENTONACIÓN

- CON SOLFEO TRADICIONAL.
- SI QUIERES, PUEDES USAR DO MÓVIL.

③



4. DICTADO RÍTMICO

4



A rhythmic dictation exercise on a single staff in 4/4 time. The exercise consists of four measures. The first measure contains a quarter note, a quarter note, a quarter note, and a quarter note. The second measure contains a quarter note, a quarter note, a quarter note, and a quarter note. The third measure contains a quarter note, a quarter note, a quarter note, and a quarter note. The fourth measure contains a quarter note, a quarter note, a quarter note, and a quarter note.

5. DICTADO MELÓDICO / RÍTMICO

5 ♩ = 60



A melodic and rhythmic dictation exercise on a single staff in 4/4 time. The exercise consists of four measures. The first measure contains a quarter note, a quarter note, a quarter note, and a quarter note. The second measure contains a quarter note, a quarter note, a quarter note, and a quarter note. The third measure contains a quarter note, a quarter note, a quarter note, and a quarter note. The fourth measure contains a quarter note, a quarter note, a quarter note, and a quarter note.

6. RECONOCER TRIADAS MAYORES / MENORES

6



A triad recognition exercise on a single staff in 4/4 time. The exercise consists of four measures, each containing a triad. The first measure contains a major triad (C4, E4, G4). The second measure contains a minor triad (C4, E3, G3). The third measure contains a major triad (C4, E4, G4). The fourth measure contains a minor triad (C4, E3, G3).

Prueba Teórica

7. ESCRIBE:

- EL COMPÁS DE CADA EJEMPLO.
- INDICA LOS PULSOS (GUIÓN / CRUZ).



8. PON LÍNEAS DIVISORIAS DE COMPÁS.

- INDICA PULSOS (GUIÓN / CRUZ)



9. INDICA LIGADURAS:

- UNIÓN (U)
- EXPRESIÓN (E)



10. INDICA TONOS Y SEMITONOS EN CADA INTERVALLO.

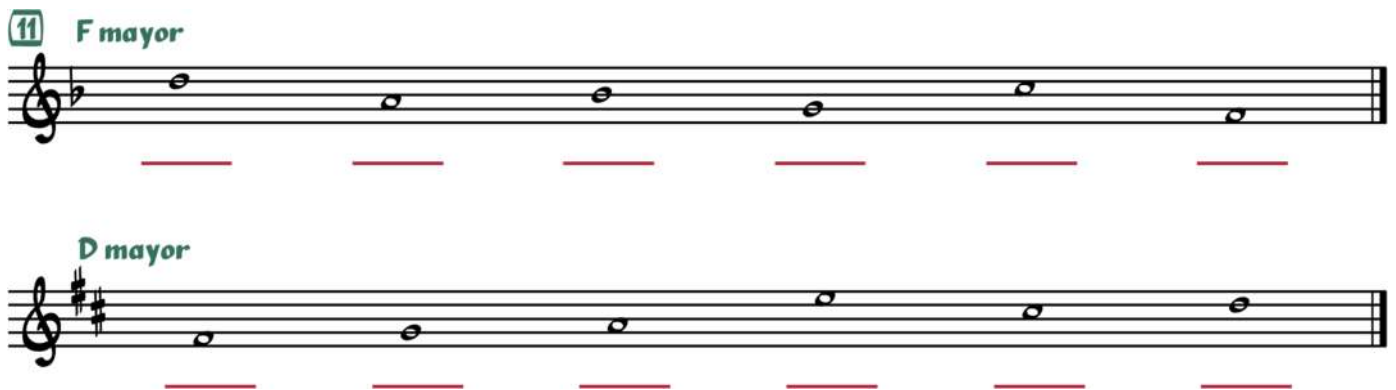
10



Two staves of music in treble clef. The first staff contains four intervals: G4-A4, A4-B4, B4-C5, and C5-D5. The second staff contains four intervals: D4-E4, E4-F4, F4-G4, and G4-A4. Each interval is marked with a red line above the notes.

11. INDICA LOS GRADOS CORRESPONDIENTES A CADA NOTA EN LAS SIGUIENTES ESCALAS.

11 F mayor



Two staves of music in treble clef. The first staff is for F major (one flat) and contains the notes F, G, A, Bb, C, D. The second staff is for D major (two sharps) and contains the notes D, E, F#, G, A, B. Below each note is a red line for indicating the scale degree.

12. SEGÚN LA ARMADURA, ESCRIBE LA TONALIDAD MAYOR CORRESPONDIENTE.

12

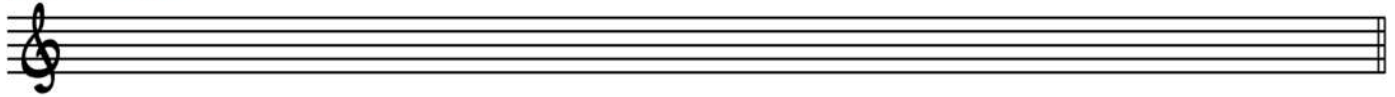


A single staff of music in treble clef. It contains four key signatures: three sharps (F#, C#, G#), two sharps (F#, C#), one sharp (F#), and one flat (Bb). Each key signature is marked with a red line above it.

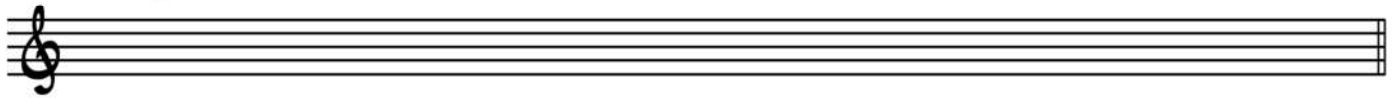
13. CONSTRUYE LAS SIGUIENTES ESCALAS.

- NO PONGAS ARMADURA.
- ESCRIBE CADA NOTA CON SU ALTERACIÓN.

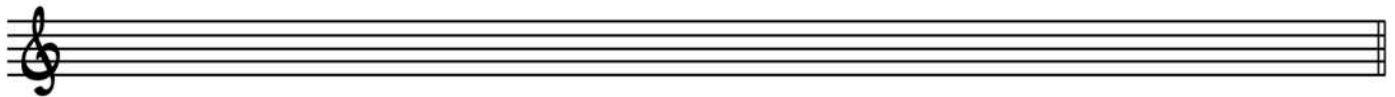
13 E mayor



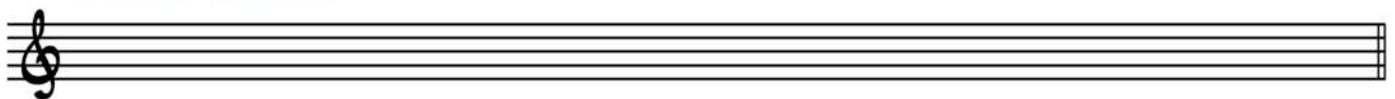
B \flat mayor



B menor natural



D menor armónica



14. ESCRIBE LAS SIGUIENTES TRIADAS.

14 E

C-

F-

A \flat



15. IDENTIFICA LAS SIGUIENTES ESCALAS.

15



The first staff shows a scale starting on G4 with notes: G, A, Bb, C, D, Eb, F, G. The second staff shows a scale starting on G4 with notes: G, A, B, C, D, E, F, G. The third staff shows a scale starting on G4 with notes: G, A, B, C, D, E, F, G. The fourth staff shows a scale starting on G4 with notes: G, Ab, B, C, D, Eb, F, G.

16. ESCRIBE EL TIPO DE INTERVALO.

16



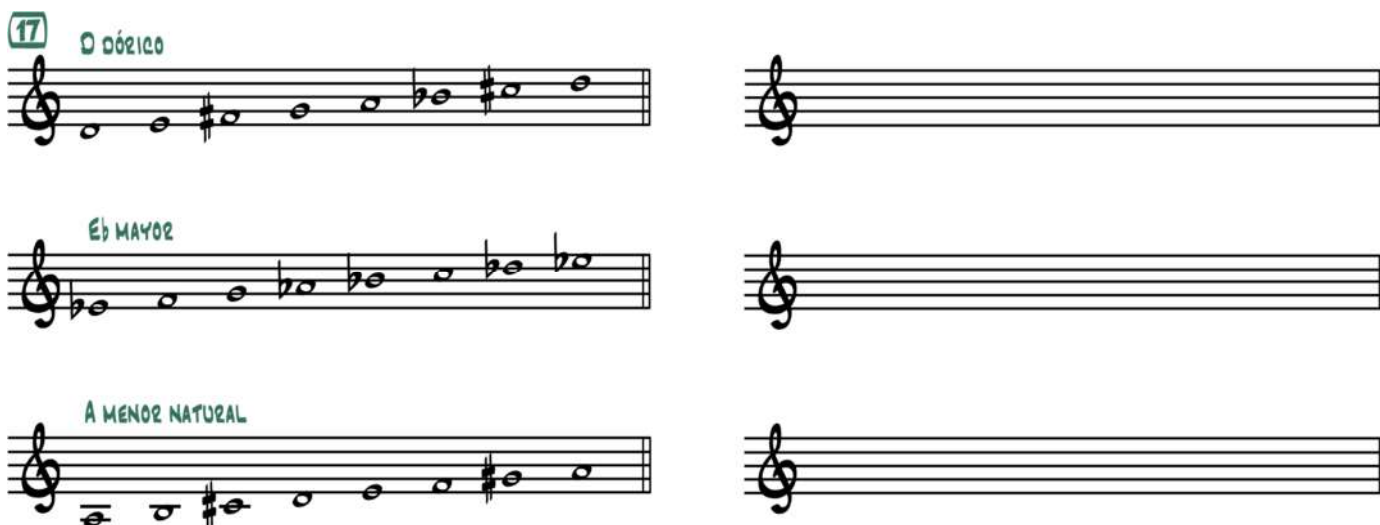
The first staff contains four intervals: G4 to Bb4, G4 to B4, G4 to B4, and G4 to Bb4. The second staff contains four intervals: G4 to A4, G4 to Bb4, G4 to Bb4, and G4 to B4.

17. RODEA LOS FALLOS EN LAS SIGUIENTES ESCALAS.

- ESCRÍBELAS CORRECTAMENTE EN EL SIGUIENTE COMPÁS.

17

DÓRICO



The first staff shows a scale starting on G4 with notes: G, A, B, C, D, Eb, F, G. The second staff shows a scale starting on G4 with notes: G, Ab, B, C, D, Eb, F, G. The third staff shows a scale starting on G4 with notes: G, A, B, C, D, E, F, G.

18. ESCRIBE LA NOTA INDICADA EN LAS SIGUIENTES CLAVES.



19. INDICA SI SON FALSAS O VERDADERAS LAS SIGUIENTES AFIRMACIONES.

V _____ F

- LOS TÉRMINOS *ASSAI*, *PIÚ*, *POCO*...ACOMPAAÑAN A OTROS TÉRMINOS RELACIONADOS CON LA VELOCIDAD.
- *FP*, SIGNIFICA *FORTE/PIANO*, COMO SE PREFIERA.
- *ANDANTINO* ES MÁS RÁPIDO QUE *ANDANTE*.
- EL TÉRMINO *LATIN* EN UNA PARTITURA NOS INDICA QUE DEBEMOS INTERPRETAR LAS CORCHEAS EN SENTIDO DE TRESILLO.
- *SIMILE* NOS SEÑALA QUE DEBEMOS INTERPRETAR LOS COMPASES INDICADOS DE FORMA PARECIDA.